

Access Ad Store

To access the Ad Store user interface, log into <https://www.Ad Store.tv> with your designated username and password. After your initial login, you can change your password by clicking on your name at the top right of the screen.

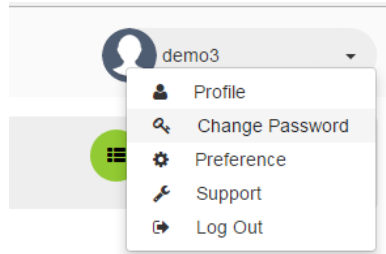


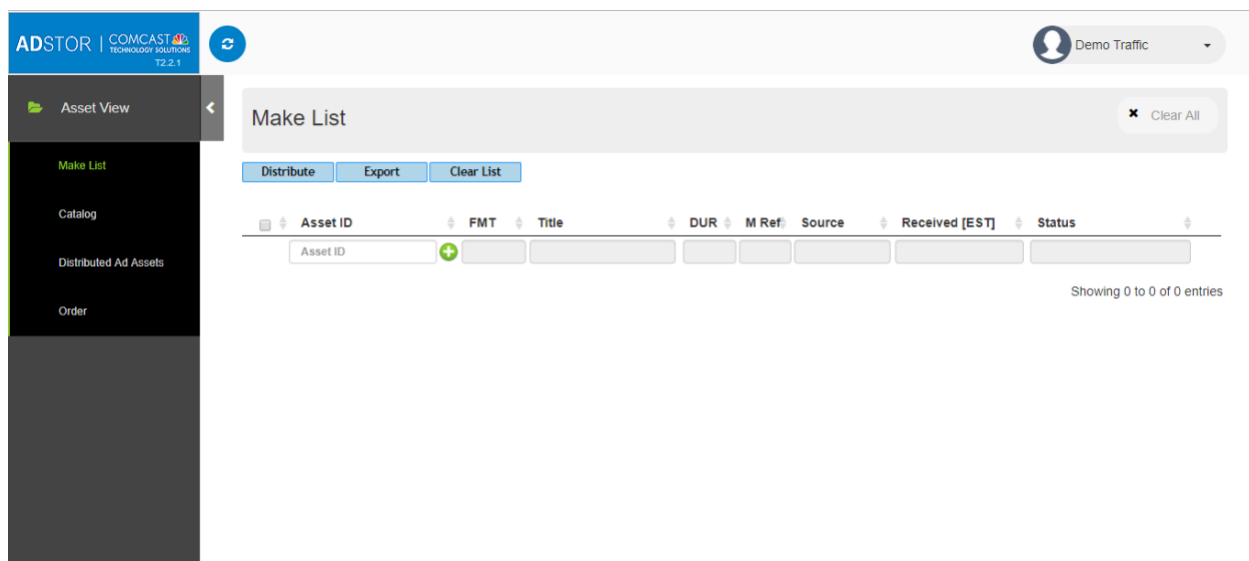
Figure 2

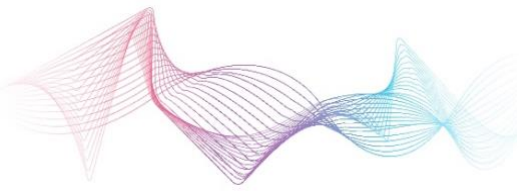
User Access to Information and Features

Ad Store includes rights management to ensure that access to your information and Ad assets is available to only authorized user accounts. In addition, User Roles have been established to grant access to a set of features and actions. Please contact Ad Store support if you would like for more information on Ad Store rights management and established roles. (see [Contact Information](#)).

Interface Layout

After logging in, the default view will look similar to the screenshot below:





COMCAST TECHNOLOGY SOLUTIONS

In the left navigation panel, the “Asset View” section contains the main views for completing most operational functions, including the following:

- The “Make List” view is the default view and allows you to enter Ad-ID/ISCI codes/Asset ID and view information on the Ad content in Ad Store as well as distribute the selected Ad content. This view also provides status on any processing or order involved the Ad content entered.
- The “Catalog” view provides a list of all the Ad Content your currently can access in Ad Store. This is also the view that will assist you in finding status on any Ad Content.
- The “Distributed Ad Assets” view not only provides the list of Ad Content that have been distributed to assigned destinations but also provides the MAID (Movie Asset ID) and other important information for each distributed Ad Content.
- The “Order” view provides a list of all orders, order status and information for each Delivery of Ad Content within an order.

Returning to the default view is available by clicking on the Ad Store | Comcast Technology Solutions logo at top left corner of the screen.



Hiding and exposing the left navigation panel is available by clicking on the arrow next to the Asset View.

